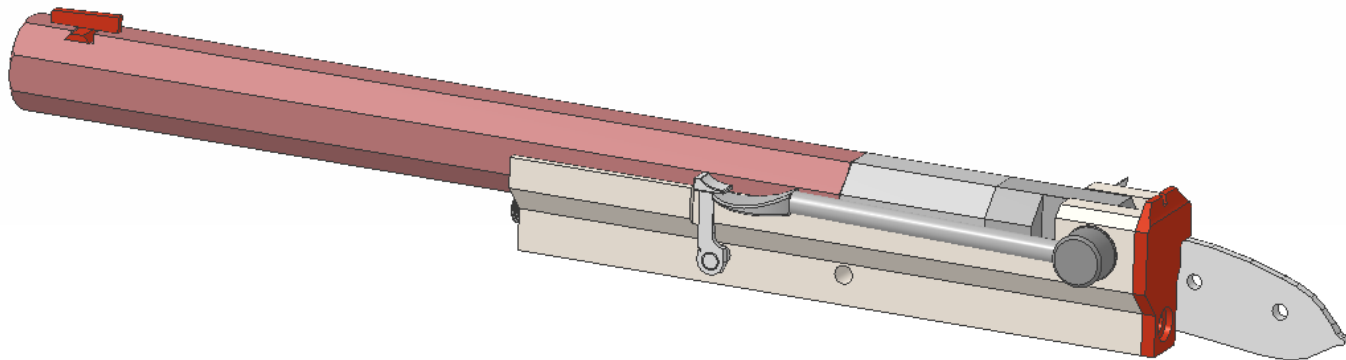
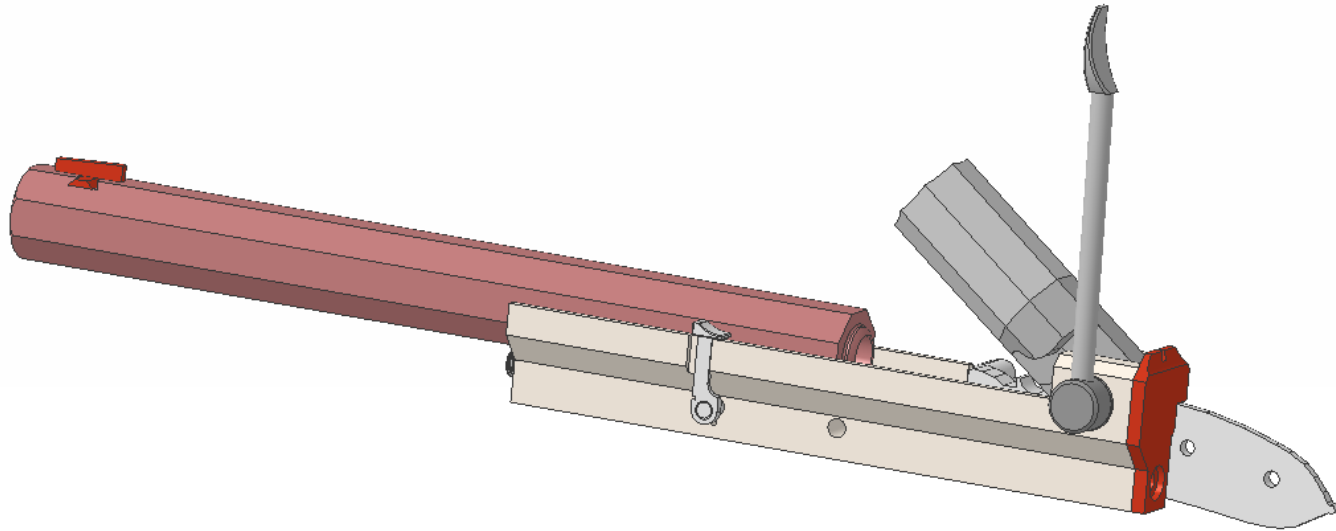


Breech-loading Flintlock Pistol Reciever



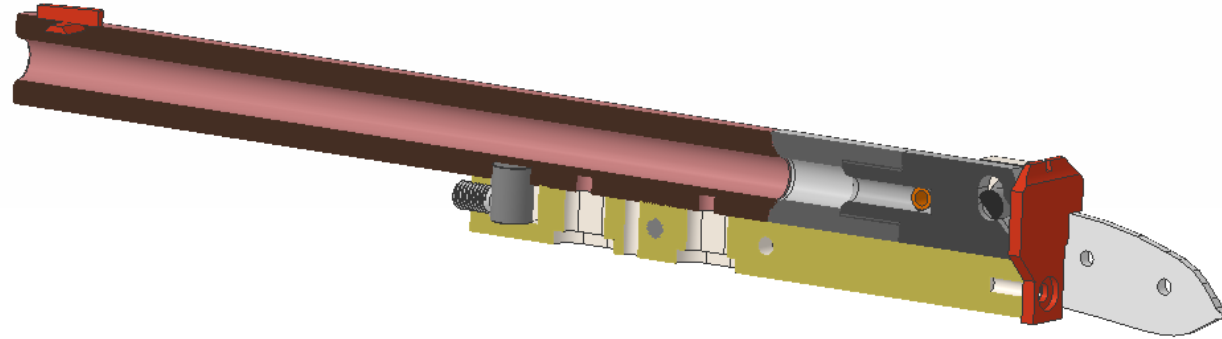
Locked position

Breech-loading Flintlock Pistol



Loading position

Breech-loading Flintlock Pistol



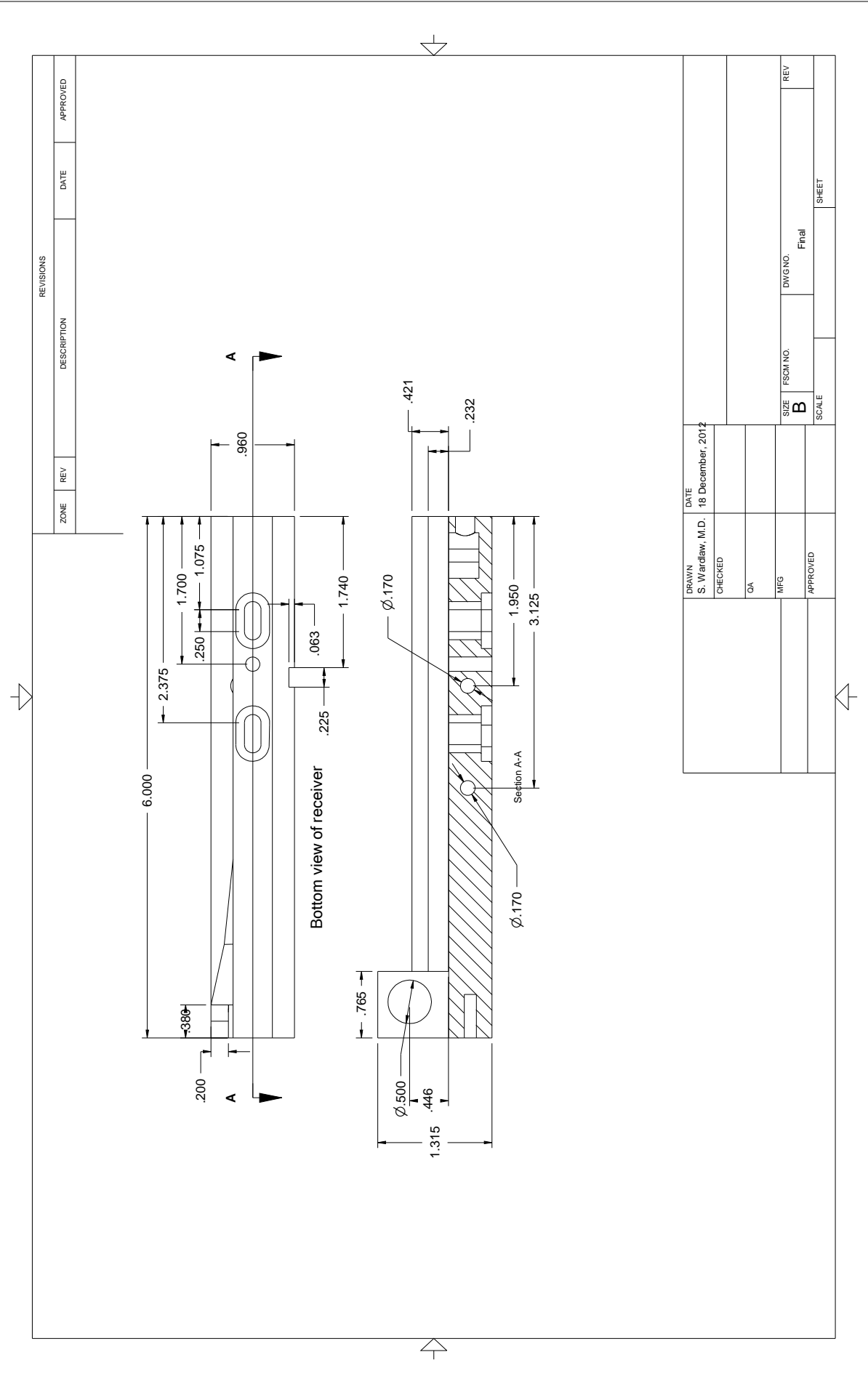
Cut-away view in locked position

Receiver



Front of receiver

REVISIONSDESCRIPTIONDATE _____APPROVED



Receiver side

Technical drawing of a mechanical part, showing a front view, a right side view, and a cross-section B-B.

Front View Dimensions:

- Overall length: 1.175
- Top flange width: .383
- Top flange thickness: .270
- Bottom flange radius: R.188

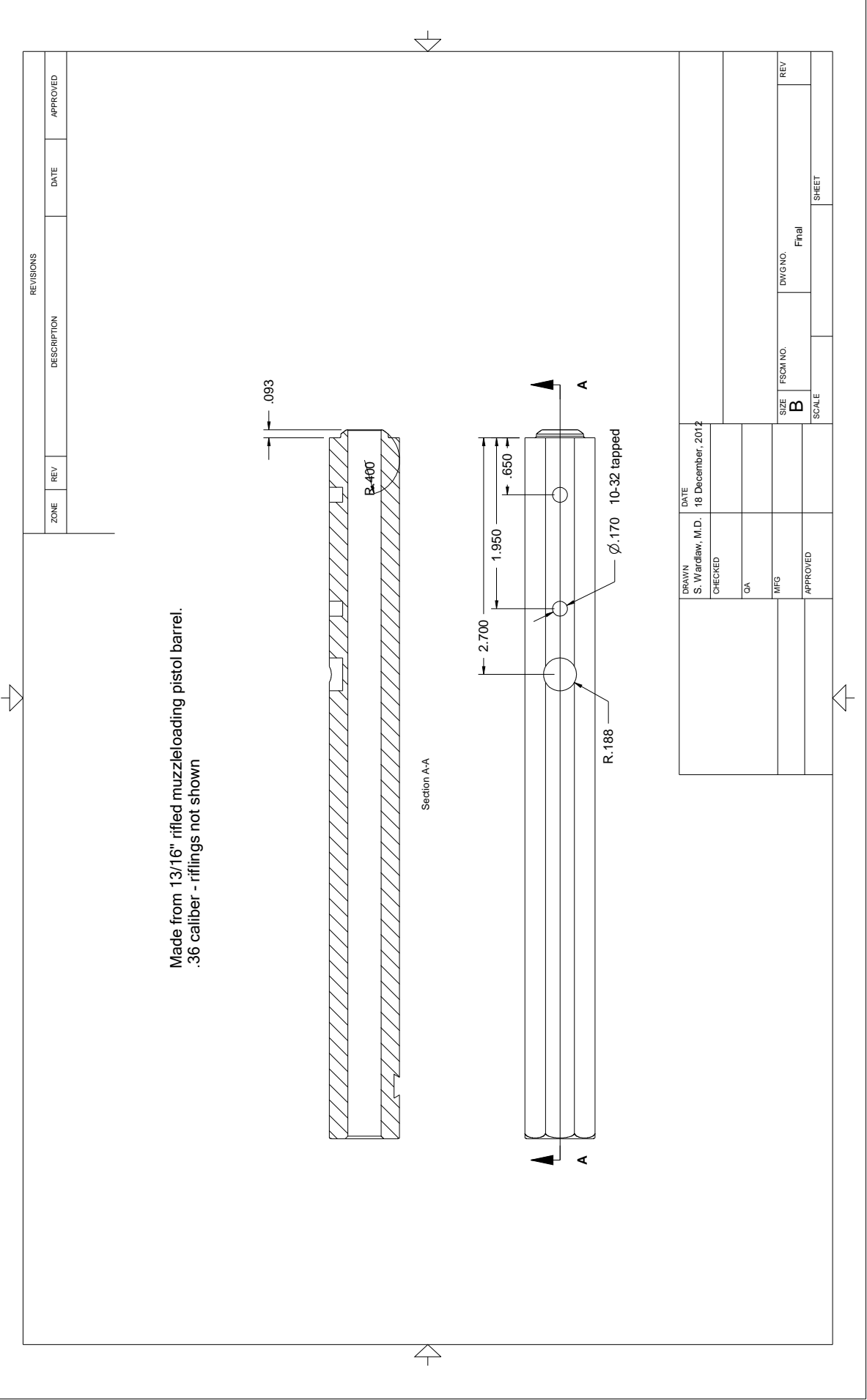
Right side view: Shows a fillet radius of R.33.

Section B-B: Shows a cross-section with a thickness of .088.

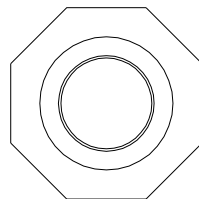
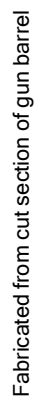
REVISIONS				
ZONE	REV	DESCRIPTION	DATE	APPROVED

DRAWN S. Wardlaw, M.D.	DATE 18 December, 2012
CHECKED	
QA	
MFG	
APPROVED	

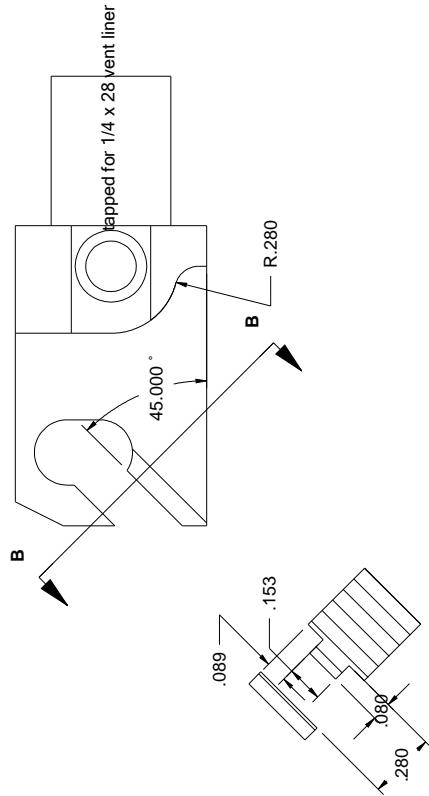
SIZE B	FSCM NO.	DWG NO.	REV
SCALE		Final	
SHEET			



Breech



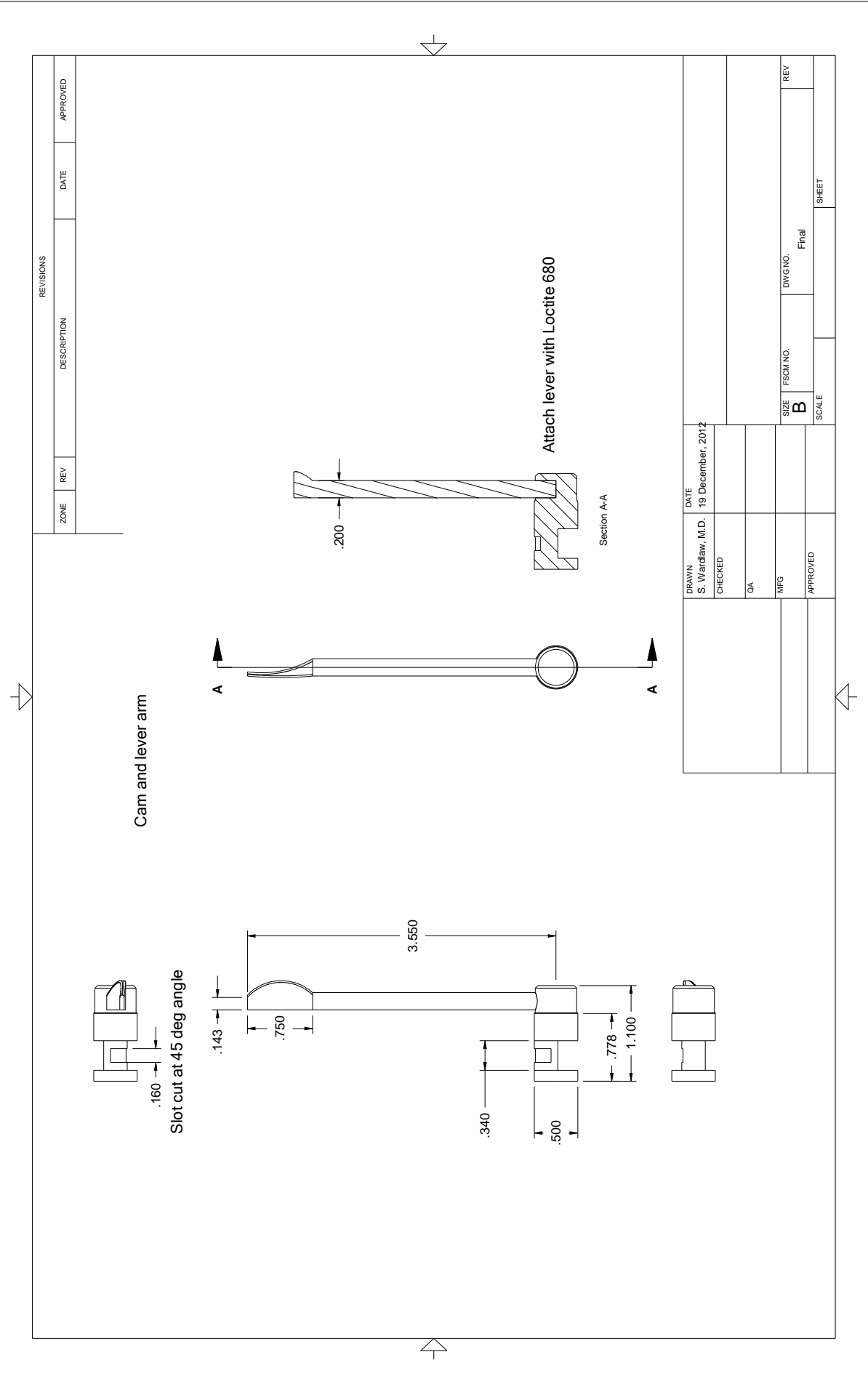
Breech plug

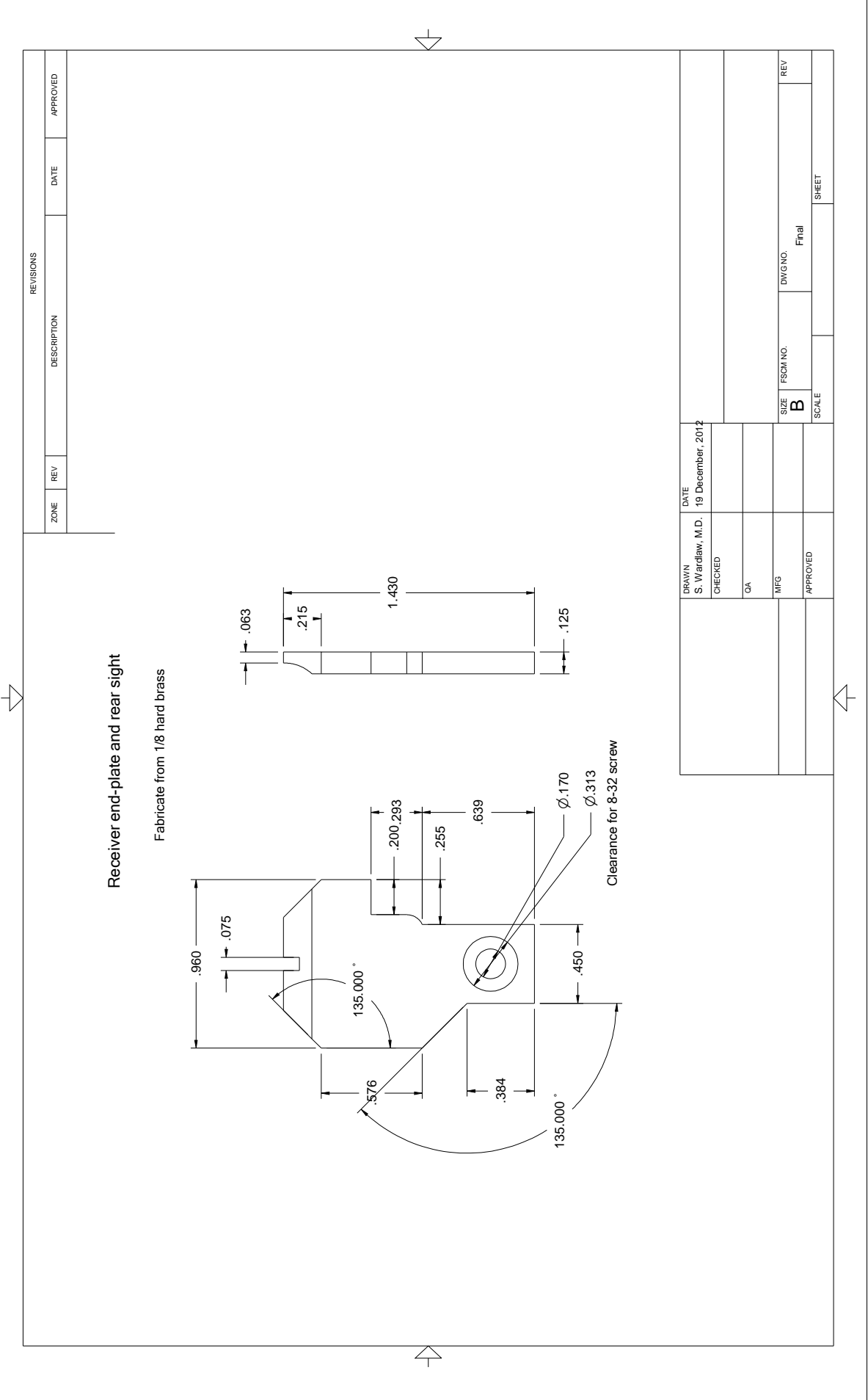


Section B-B

Section A-A

	DRAWN	DATE				
	S. Wardlaw, M.D.	18 December, 2012				
	CHECKED					
	QA					
	MFG		SIZE	FSCM NO.	DWG NO.	REV
			B		Final	
	APPROVED		SCALE		SHEET	





	DRAWN S. Wardlaw, M.D.	DATE 19 December, 2012				
	CHECKED					
	QA					
	MFG		SIZE	FSCM NO.	DWG NO.	REV
	APPROVED		B		Final	
			SCALE			SHEET

Retaining catch